



The supremacy of ideas.

ROTO

40.25 MCSS

ROTO
40.25 MCSS



PERFORMANCE AND DIMENSIONS



Weight

Operating weight (with forks)	kg	15450
-------------------------------	----	-------

Performance

Maximum lift capacity	kg	4000
Maximum lift height	m	25,25
Maximum reach	m	22,7
Lift height with maximum capacity	m	13,6
Reach with maximum capacity	m	8,2
Capacity at maximum lift height	kg	1500
Capacity at maximum reach	kg	150
Upperstructure rotation		continuous

Engine 6 cylinder turbo complying with Euro 2 emission standard
 Power 107 kW (145 HP) at 2300 rpm (97/68/CE)

Speed

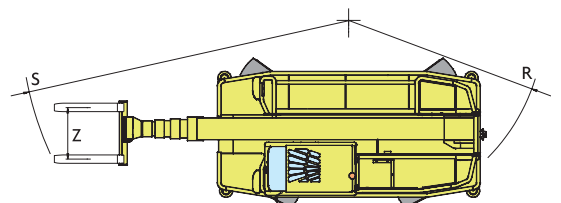
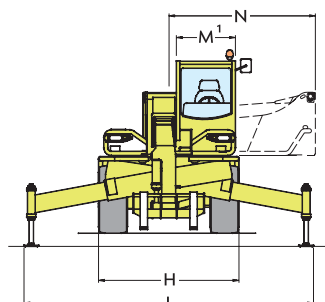
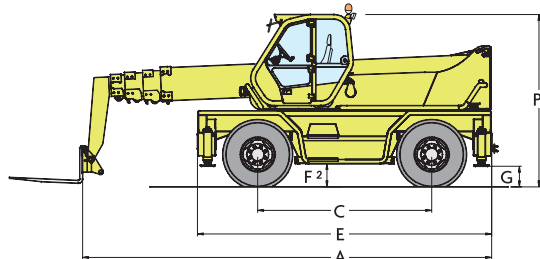
1st speed	kph	16
2nd speed	kph	40

Dimensions

A	mm	6980
C	mm	2970
E	mm	5030
F	mm	330
G	mm	440
H	mm	2400
L	mm	4950
M	mm	995
N	mm	2505
P	mm	2990
R	mm	4050
S	mm	6580
Z	mm	850

① Internal usable width.

② ± 65 mm. Measured at suspension mid-point.



Cab

- Conforms to ISO 3449 (FOPS).
- The cab module tilts up to 18°.
- '5 x 1' electronic proportional joystick (a second joystick is available as option).

Boom

- Five section telescopic assembly constructed of high yield steel, sliding upon anti friction wear pads.
- The hydraulic components are internally mounted within the boom structure for maximum protection.

Fork carriage

- Hydraulic operation of the 'tac-lock' gives control of attachment locking from the cab.
- A single double-acting hydraulic service is provided at the boom end, together with quick couplings.

Forks

- Floating type: 1200mm long 130 x 50 mm section.
- Fork spacing manually adjustable between 450mm and 1050mm

Stabilisers

- Four independent hydraulically operated stabilisers.
- Automatic and simultaneous retraction on command.

Steering

- All four wheels steer, and have an automatic resynchronisation system in case of misalignment, as well as selection of 3 steer modes.

Engine

- 6 cylinder water cooled turbo intercooled Nef engine, compliant with Euro 2 emission regulations, direct injected and rated at 107 kW (145 HP) at 2300 rpm (97/68/CE).

Transmission

- Hydrostatic with variable flow piston pump with electronic management
- Automatic and continuously variable speed from 0 to 40 kph simply by using the accelerator pedal.
- Electrically operated two speed range change gearbox.
- 'Finger touch' system means it is possible to change direction even whilst the machine is moving, without the driver moving his hand from the steering wheel.
- Permanent four wheel drive.
- Portal axles for increased ground clearance.

Braking system

- Service brakes: hydraulic disc brakes on all 4 wheels, acting upon the half shafts at the differential.
- Automatic parking brake; locking disc brake on main transmission drive shaft, hydraulically released.

Hydraulic system

- 'Load-sensing' hydraulic system.
- Variable delivery axial piston pump.
- Maximum flow rate: 120 l/min.
- System pressure: 230 bar.

Electrical system

- 12 V system with 160 Ah battery and 90 alternator.
- Road lighting including rotating beacon.

Service capacities

- Hydraulic system: 130 litres
- Fuel: 155 litres
- Hydrostatic oil: 12 litres
- Engine oil: 12 litres
- Engine coolant: 12 litres

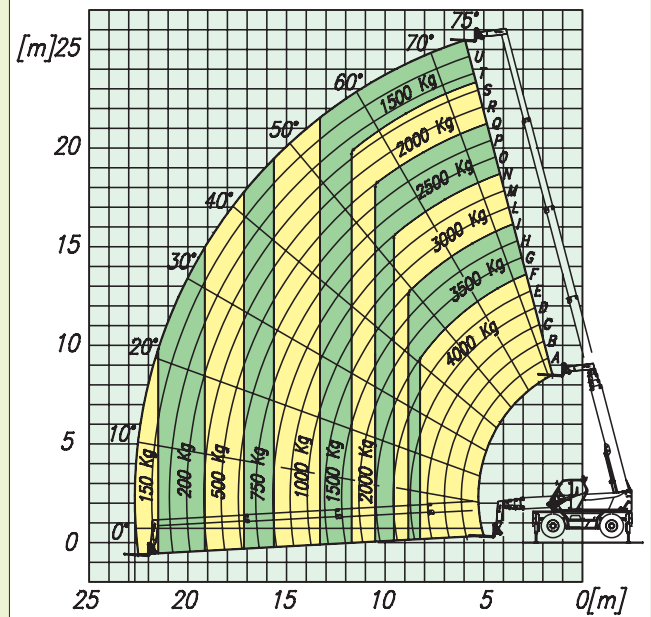
Tyres

- 18-22.5 16 PR

Options

- Second electronic joystick mounted on left seat arm
- Radio remote control
- Rear axle differential lock
- Generator 4 kVA - 220 V
- Cab mounted working lights
- Prearranged double acting hydraulic service
- Air conditioning
- Anti-theft immobiliser

ROTO 40.25 MCSS WITH FORKS ON STABILISERS - 360° SLEW



ROTO 40.25 MCSS WITH FORKS ON TYRES

